



**DALS
LIGHTING**

Canada
80, de la Seigneurie blvd., E.
Blainville, Quebec J7C 4N1

U.S.A.
4383, NW 124th Ave.,
Coral Springs, Florida 33065

877.430.1818
info@dals.com
dals.com

MODEL NAPF30-CC-UNV

NAME Napa

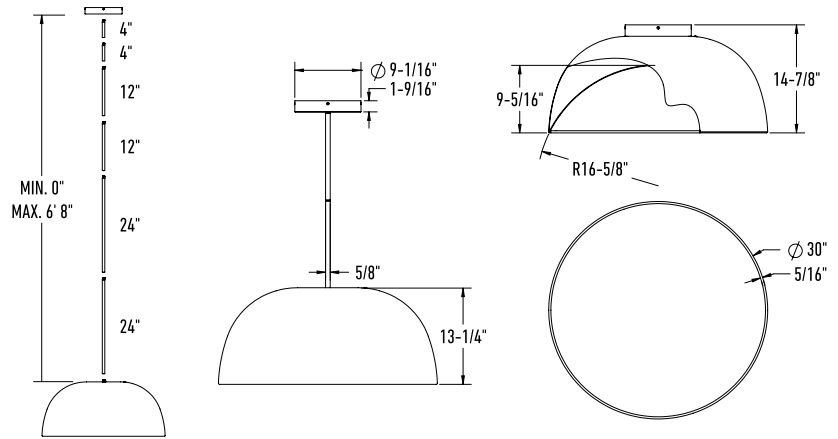
2-in-1 30" Pendant and Flush mount
The Napa fixture features a timeless dome-shaped design and the flexibility to be mounted as either a pendant or a flush mount. Its unique internal dome lens hides the light source, delivering a soft, gradient glow without glare. This product includes quick-connect stems for effortless installation.



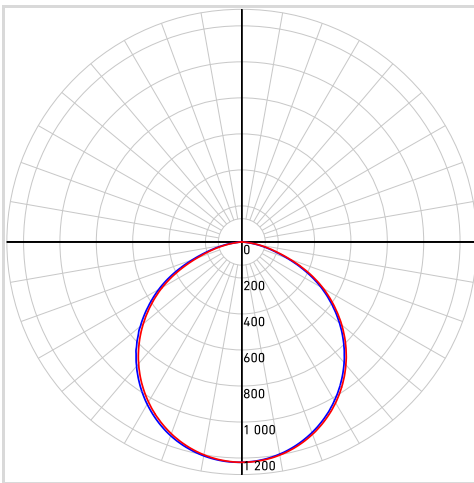
PROJECT _____ **TYPE** _____

DATE _____ **QTY** _____

NOTES



LIGHT DISTRIBUTION



*Lumen output measured at 3000k

QUICK SPECS

Size	30"
Watts (W)	60
Delivered lumens*	3330
CRI	90
Voltage (v)	120
Beam angle (deg)	105
Mounting	Screwed in
Lifespan (hrs)	50 000
Binning	5 SDCM
LED model	SDM 2835
Light direction	Down
Color temperature	2700K/3000K/3500K/4000K/5000K

ELECTRICAL DETAILS

Environment	Dry
Location	Indoor
Operating temp. (° C)	-20 to 40
IP rating	IP20
Input voltage (V)	120, 277, 347V
Output voltage (V)	35.9
Output current (mA)	920
Power factor	98
Driver type	Constant current
THD	≤ 30%
Certifications	ETL, FCC, ICES, T24/JA8

ORDERING GUIDE

NAPF30-CC-UNV

- _____

Finish

WH - White ○

BK - Black ●

CONSTRUCTION

Lens material PS

Lens type Frosted

Finish type Sandy

Housing material Aluminum

WHAT'S IN THE BOX	ACCESSORIES	ADAPTORS
LED fixture Included stems: 2x 4", 2x 12", 2x 24" Mounting bracket Mounting hardware Wire nuts Instruction sheet	NAPF20-ACCST24-BK 24in stem for NAPFXX-CC, Black NAPF20-ACCST24-WH 24in stem for NAPFXX-CC, White ACCSTSL-XX Sloped ceiling adaptor (black or white)	

RECOMMENDED DIMMER LIST*

BRAND	MODEL	DIMMER SPECS	GRADE	DIMMING RANGE %		MAX LOAD
				MIN	MAX	
Lutron	DVELV-300P-WH	300W electronic low voltage dimmer	Compatible	7	100	5
Lutron	MA-PRO-WH*	ELV, 250W LED/CFL	Compatible	1	100	4
Lutron	Caseta PD-5NE-WH-C*	ELV, LED—up to 250 W	Compatible	3	100	4
Control 4	C4-APD120-WH	ELV, 120W LED	Compatible	0	100	2
Lutron	DVSTV (0–10 V Controls)*	960W, 8A, 120–277 V	Compatible	0	100	16
Leviton	IP710-LFZ (0–10 V Controls)	1200VA, 10A LED, 120-277V	Compatible	0	100	20
Leviton	ZS057-30Z (0-10 V Controls)	1388VA, 347VAC / 4A	Compatible	0	100	13
Lutron	RMJS-8T-DV-B (0-10 V Controls)	120 / 277V, 8A,	Compatible	0	100	16

*With Low-End Adjustment Feature

Minimal buzzing noise may occur with some dimmers

WARRANTY

DALS offers a 5-year warranty from the date of purchase which covers repairs or replacement of defective parts of the housing, optics, and electronics. To contact DAL'S customer service call 1-877-430-1818 or send an e-mail to info@dals.com.