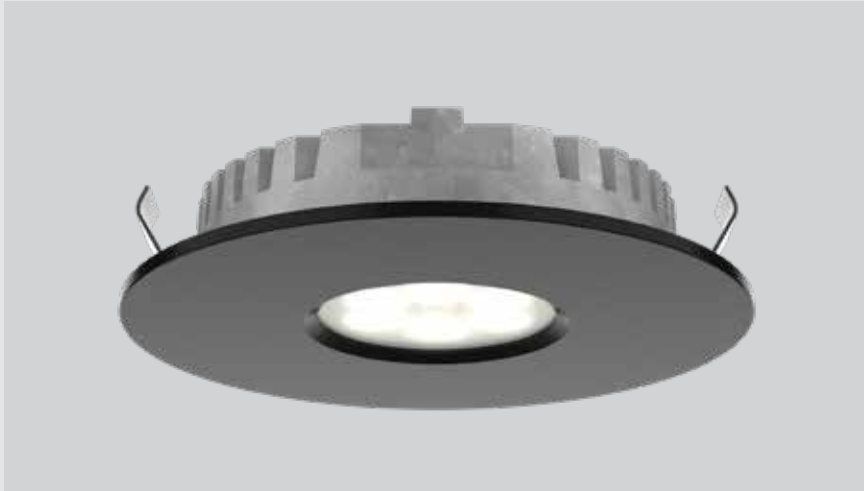


SUPER-PUCK RECESSED

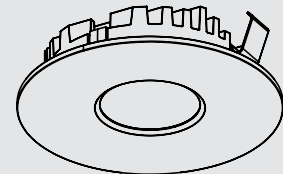


Enjoy energy-saving white light in a variety of attractive finishes. These LED pucks are well suited to accent and task lighting under cabinets and in other areas.

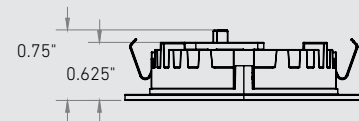


4001-CC

Ø2.375"



Ø2.625"



Model	Size	Watts	Delivered lumens	CRI	Color °T	Voltage
4001-CC	Ø2.625"	3 W	150 lm	90	2700, 3000, 3500, 4000, 5000 K	12 V

Specifications

12V DC LED driver required
 12" input lead with quick connector
 24" interconnection harness included
 Switch-selectable CCT
 Smooth 360° wide spread
 5-year warranty

Power supplies: plug-in

ETR-LED10WPI
 12V DC/10W class 2 LED driver
ETR-LED24WPI
 12V DC/24W class 2 LED driver

Power supplies: hard-wired

DD1260
 LED driver and dimmer in one unit
BT06DIM-IC
 6W dimmable LED hardwire driver
BT12DIM-IC
 12W dimmable LED hardwire driver
BT24DIM-IC
 24W dimmable LED hardwire driver
BT36DIM
 36W dimmable LED hardwire driver
BT48DIM
 48W dimmable LED hardwire driver

Finish

- **BK** Black
- **GD** Gold
- **SN** Satin Nickel
- **WH** White

Accessories

- 4000-E24**
24" extension cord
- 4000-E60**
60" extension cord
- 4000HRNS-24**
24" interconnection harness

Note

Plug-in or hard-wired power supply required for installation. Sold separately.
 Other color temperatures, finishes, and voltage options are available but may require minimum order quantities (MOQs) and longer lead times. Please contact your DALs representative for more information.