

Pivot multi

With an infinite choice of beam directions, Pivot Duo and Trio provide a discrete yet functional solution for general or accent lighting within your space.

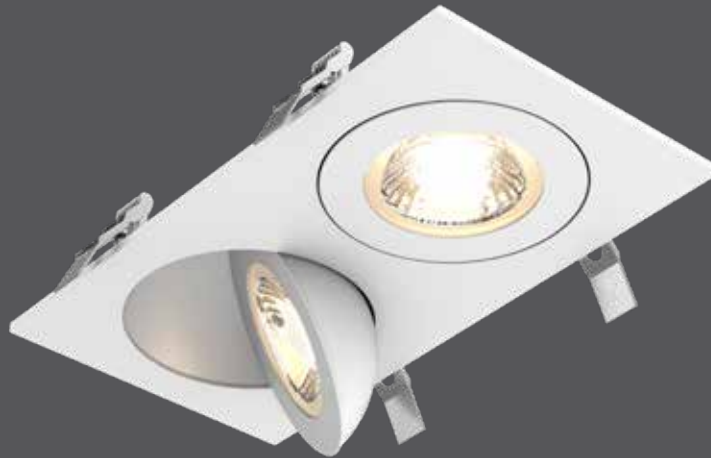
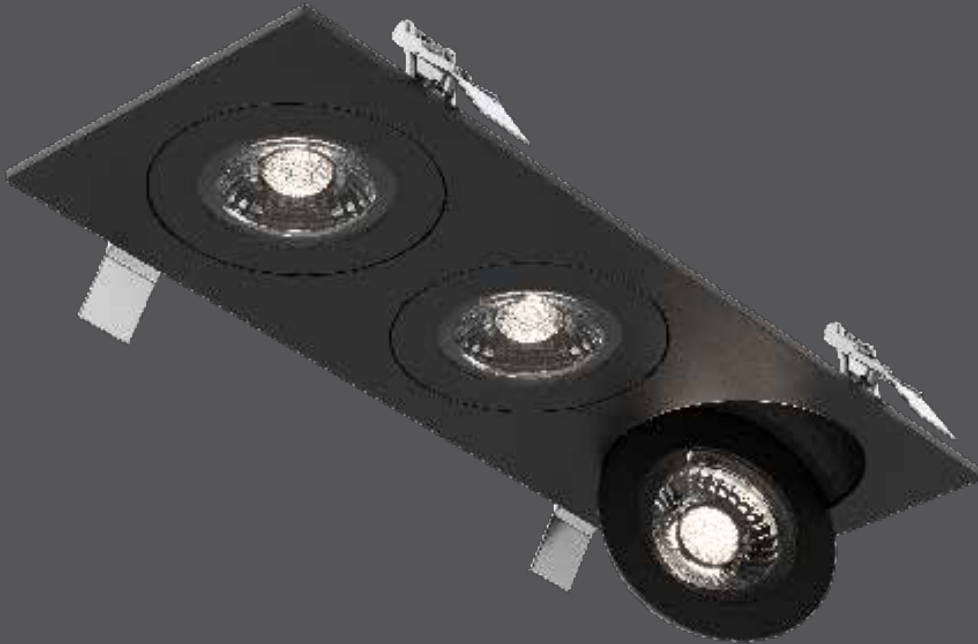
NEW

WET SWIVEL/DIRECTIONAL 90°

ETL Intertek IC RATED

2700k 3000k 3500k 4000k 5000k
COLOR TEMPERATURE

ENERGY STAR T24 JA8 CERTIFIED



Model	Size	Watts	Delivered lumens	CRI	Color °T	Standard voltage	Multi-voltage ⚡
FGM4-CC-DUO	2x 4"	18 W	1475 lm	90	2700, 3000, 3500, 4000, 5000 K	120V, Triac dimming	MV: 120 / 277 / 347V, 0-10V dimming
FGM4-CC-TRIO	3x 4"	27 W	2300 lm				

Specifications

Includes a junction box with integrated dimmable driver
 Can be daisy chained
 Superior LED performance and lifespan
 90° tilting, 360° rotation
 Minimal heat emission
 Aluminum construction
 Switch-selectable CCT: 2700K/3000 K/3500 K/4000 K/5000 K
 Low profile
 40° beam spread
 IC certification (suitable for direct contact with insulation)
 Air-tight certified as per ASTM E283-04
 Suitable for wet locations
 Refer to website for dimmer compatibility
 Ideal operating temperature: -20° to 40° C
 5-year warranty

Finish

- **BK** Black
- **WH** White

Accessories


- RFP-DUO**
Rough-in plate
- RFP-TRIO**
Rough-in plate
- REC-CC-EXT8FT**
8-foot extension cable
- REC-CC-EXT20FT**
20-foot extension cable

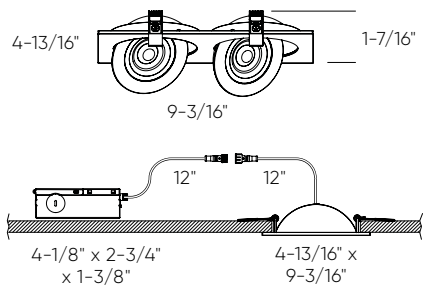
Multi-voltage ⚡

This product family offers multi-voltage drivers (120/277/347) that are dimmable using 0-10V dimming systems. Please note that longer lead times may apply for this option. Kindly reach out to your DALI representative for additional information and to confirm availability.

Note

Other color temperatures, finishes, and voltage options are available but may require minimum order quantities (MOQs) and longer lead times. Please contact your DALI representative for more information.

FGM4-CC-DUO 8-5/8" X 4-3/4" 



FGM4-CC-TRIO 13" X 4-5/8" 

