
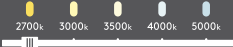

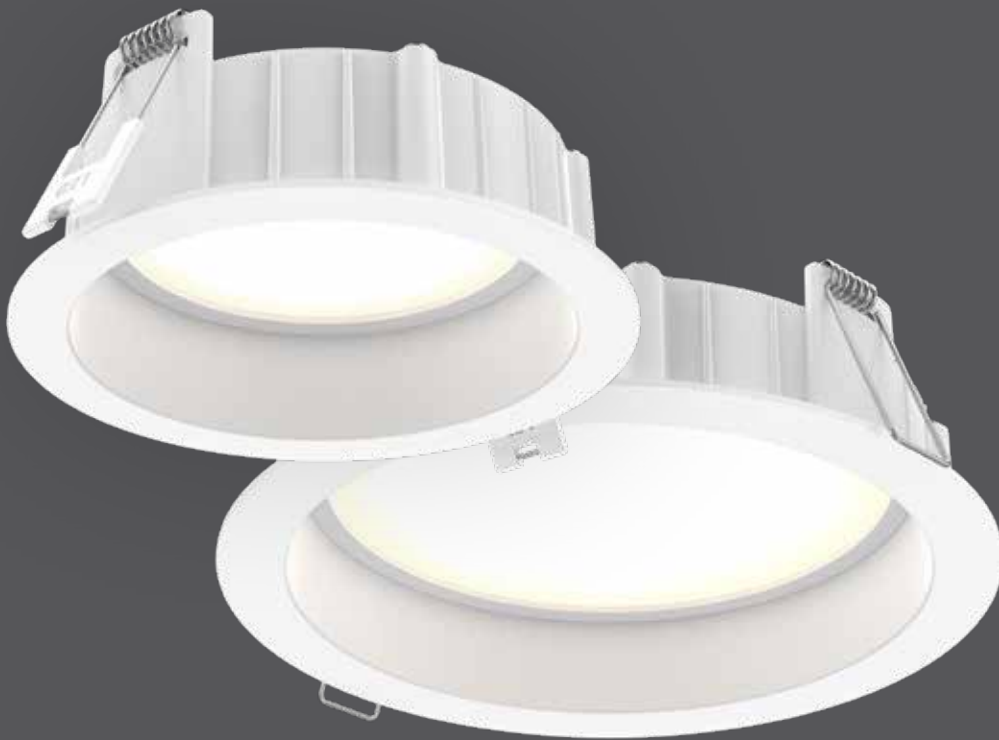


Notch

The Notch series of recessed downlights is characterized by a deep-set LED position which greatly reduces glare, neatly packaged in a price-conscious solution to general lighting.

NEW WET LOW-GLARE  **IC**
Intertek RATED

 AIR TIGHT  2700k 3000k 3500k 4000k 5000k COLOR TEMPERATURE **JA8** CERTIFIED 



Model	Size	Watts	Delivered lumens	CRI	Color °T	Voltage
DRR4-CC	4"	11 W	800 lm	90	2700, 3000, 3500,	120 V
DRR4-CC-V*	4"	11 W	800 lm		4000, 5000 K	120, 277 V
DRR6-CC	6"	14 W	1000 lm			120 V
DRR6-CC-V*	6"	14 W	1000 lm			120, 277 V

* 0-10V dimming

Specifications

Every fixture includes a junction box with an integrated driver
 Over 50,000 hours of service life
 Can be daisy chained
 Smooth 360° wide spread
 100° beam angle
 Frosted lens
 Edge lit technology
 Switch-selectable CCT: 2700 K/3000 K/3500 K/4000 K/5000 K
 IC certification (suitable for direct contact with insulation)
 Air-tight certified as per ASTM E283-04
 Suitable for wet locations
 Ideal operating temperature: -20° to 40° C
 Refer to website for dimmer compatibility
 5-year warranty

Finish

○ **WH** White

Options

DRR4-3K-DRIVER

Driver for 3000 K output

Note

Other color °T and finishes available, but may require MOQ's and longer lead times. Please contact your DALI representative for more information.

Accessories

RFP-46

Rough-in plate

RFP-UNI

Universal rough-in plate

DRR4-TRIM-BK

4" recessed panel trim in black

DRR4-TRIM-SBA

4" recessed panel trim in sandblasted aluminum

DRR6-TRIM-BK

6" recessed panel trim in black

DRR6-TRIM-SBA

6" recessed panel trim in sandblasted aluminum



DRR4-CC

Ø4-1/4"



DRR6-CC

Ø6-1/2"

