

NEW



COLOR TEMPERATURE



IC RATED

T24 JA8 CERTIFIED



REVOLVE

Our Recessed family has grown with a new range of adjustable downlights. The effortless design and high functionality of these fixtures are sure to make a welcome addition in any room.

GBR35-CC, GBR35-DW



GBR04-CC, GBR04-DW



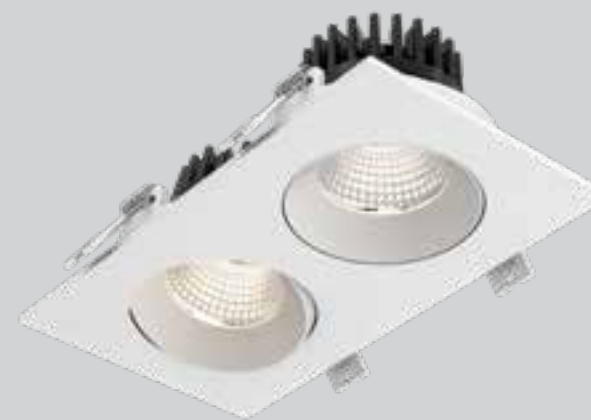
GBR06-CC, GBR06-DW



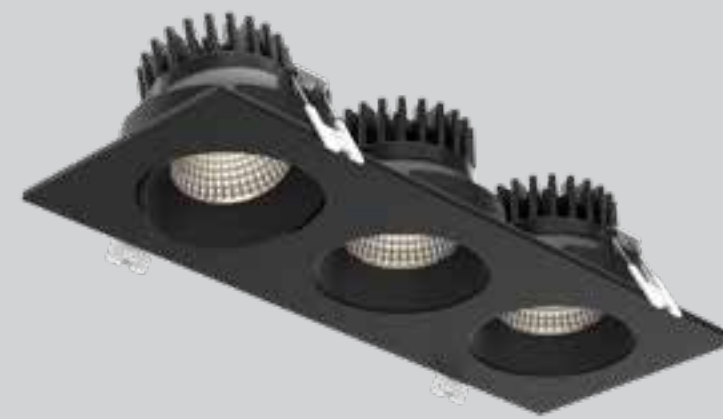
GBR35SQ-CC



GBR35-CC-DUO



GBR35-CC-TRIO



*Models GBR35-DW , GBR04-DW, GBR06-DW only

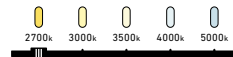
**Model GBR04-CC only

REVOLVE

Our Recessed family has grown with a new range of adjustable downlights. The effortless design and high functionality of these fixtures are sure to make a welcome addition in any room.



NEW



COLOR TEMPERATURE



WET



WARM DIMMING*



LOW-GLARE



30° SWIVEL/DIRECTIONAL



AIR TIGHT



IC RATED



T24 JA8 CERTIFIED



ETL Intertek



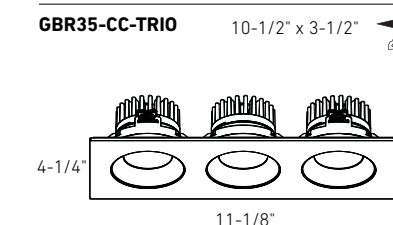
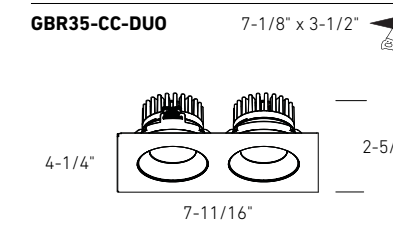
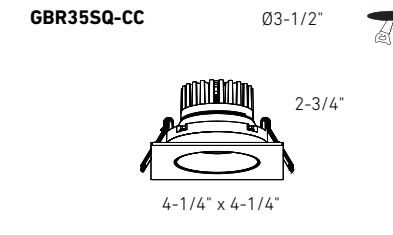
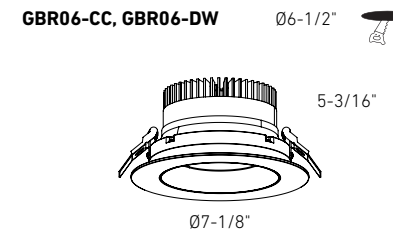
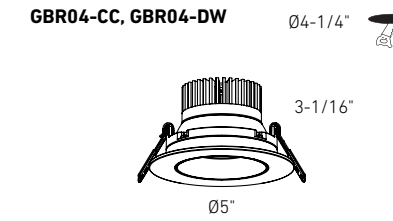
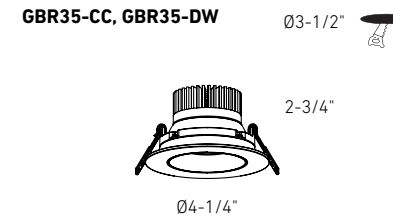
ENERGY STAR

Model	Size	Watts	Delivered lumens	CRI	Color °T	Voltage options ⚡
GBR35-CC	3.5"	12 W	860 lm	90	2700, 3000, 3500, 4000, 5000 K	120V TRIAC dimming
GBR04-CC	4"	15 W	1240 lm			
GBR06-CC	6"	20 W	1500 lm			or
GBR35-DW†	3.5"	12 W	825 lm		3000 K - 2200 K	V: 120 / 277 / 347V 0-10V dimming (Check for availability)
GBR04-DW†	4"	15 W	1210 lm			
GBR06-DW†	6"	20 W	1540 lm			
GBR35SQ-CC	3.5"	12 W	860 lm		2700, 3000, 3500, 4000, 5000 K	
GBR35-CC-DUO	2x 3.5"	24 W	1740 lm			
GBR35-CC-TRIO	3x 3.5"	36 W	3010 lm			

*Models GBR35-DW , GBR04-DW, GBR06-DW only

**Model GBR04-CC only

†Not available in multi-voltage



Specifications

Every fixture includes a junction box with an integrated driver
 Can be daisy chained
 30° tilting, 360° rotation
 Switch-selectable CCT (CC models only)
 Dim-to-warm technology, dims from 3000 K to 2200 K to mimic incandescent light (GBRXX-DW models only)
 40° beam angle
 30° tilting, 360° rotation
 5-year warranty

Finish

- BK Black
- WH White

Accessories

- RFP-35**
Rough-in plate for GBR35, GBR35SQ
- RFP-UNI**
Universal rough-in plate for GBR04, GBR06
- RFP-46**
Rough-in plate for GBR04, GBR06
- RFP-DUO**
Rough-in plate for GBR35-DUO
- RFP-TRIO**
Rough-in plate for GBR35-TRIO
- REC-CC-EXT8FT**
8-foot extension cable for GBRXX-CC models
- REC-CC-EXT20FT**
20-foot extension cable for GBRXX-CC models
- REC-3K-EXT8FT**
8-foot extension cable for GBRXX-DW models
- REC-3K-EXT20FT**
20-foot extension cable for GBRXX-DW models

Multi-voltage (V) ⚡

This product family offers multi-voltage drivers (120/277/347) that are dimmable using 0-10V dimming systems. Please note that longer lead times may apply for this option. Kindly reach out to your DALI representative for additional information and to confirm availability.

Note

Other color temperatures, finishes, and voltage options are available but may require minimum order quantities (MOQs) and longer lead times. Please contact your DALI representative for more information.