



DALS LIGHTING

Canada
80, de la Seigneurie blvd., E.
Blainville, Quebec J7C 4N1

U.S.A.
4383, NW 124th Ave.,
Coral Springs, Florida 33065

877.430.1818
info@dals.com
dals.com

MODEL NAME

LWJ16-CC

PROFILE

16" LED Wall Mount

This will not only give you up and down lighting but also central through a delicate acrylic opening. Want to adapt your lighting to your environment? No problem. This wall mount has five color temperatures to choose from which makes it ideal for city or country living.



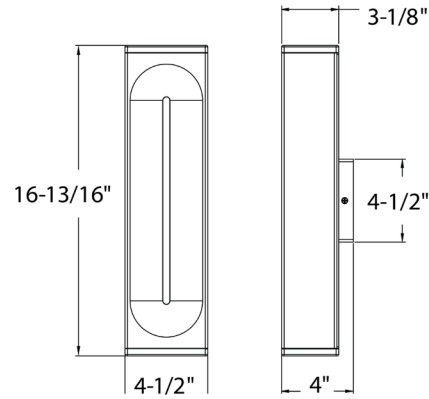
PROJECT:

DATE:

NOTES:

TYPE:

QTY:

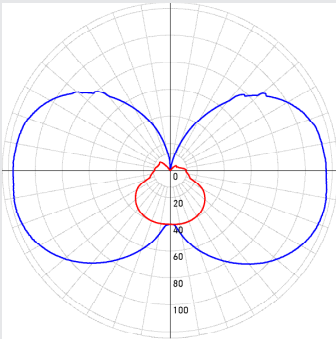


QUICK SPECS

SIZE	WATTS	DELIVERED LUMENS*	COLOR °T 5CCT	CRI	VOLTAGE	BEAM ANGLE	LIGHT DIRECTION	FINISH
16"	20W	760lm	2700K 3000K 3500K 4000K 5000K	90	120V	120°	Up, down, and center	● Black ○ White

*Lumen output measured at 3000K

LIGHT DISTRIBUTION



CONSTRUCTION

Lens
Frosted

Lens material
Glass & plastic

Finish type
Powder coated

Housing material
Aluminum

Type of LED
SMD

Mounting
Octo Jbox

RATINGS

Location
Indoor/outdoor

Environment
Wet

Lifespan
50,000 hrs.

Certifications
ETL, FCC, ICES, ADA

IP rating
IP65

Operating temperature
-20° to 50° C

WHAT'S IN THE BOX

LED wall fixture
Mounting bracket
Mounting hardware
Wire nuts
Instruction sheet

ACCESSORIES

-

ADAPTERS

-

ELECTRICAL DETAILS	Input voltage 100-132v	Output current 470mA	Power factor 100%	Driver type Constant current
	Output voltage 30-42v	LED model # 2835	THD harmonic distortion <30%	Binning type 3 SCDM

FEATURES	Integrated dimmable driver	Fully sealed light engine	Superior color consistency
	Unique up, down, and center lighting output	Switch-selectable CCT: 2700K/ 3000 K/ 3500 K/ 4000 K/ 5000 K	

WARRANTY	DALS offers a 5-year warranty from the date of purchase which covers repairs or replacement of defective parts of the housing, optics, and electronics. To contact DALS customer service call 1-877-430-1818 or send an e-mail to info@dals.com .
----------	--

RECOMMENDED DIMMER LIST*						
BRAND	MODEL #	DIMMER SPECS	GRADE	DIMMING RANGE (%)		MAX LOAD
				MIN	MAX	
Lutron	DVCL-153PR-WH-C	Triac, 150 W Dimmable CFL/LED	Compatible	0	95	8
Lutron	CTCL-153PDH-WH-C	Triac, 150 W Dimmable CFL/LED	Compatible	0	95	8
Lutron	STCL-153PH-WH-C	Triac, 150 W Dimmable CFL/LED	Compatible	0	94	8
Lutron	DVWCL-153PH-WHC	Triac, 150 W Dimmable CFL/LED	Compatible	0	95	8
Lutron	MACL-153MRHW-WHC	Triac, 150 W Dimmable CFL/LED	Compatible	0	94	8
Lutron	DVELV-300P-WH	300W electronic low voltage dimmer	Compatible	1	79	15
Lutron	MA-PRO-WH	ELV, 250W LED/CFL	Compatible	0	94	13
Lutron	Caseta PD-6WCL-WH-R-C	Triac, 150W Dimmable CFL/LED	Compatible	0	93	8
Lutron	Caseta PD-5NE-WH-C	ELV, LED—up to 250 W	Compatible	0	95	13
Lutron	Caseta	Triac, LED—up to 250 W	Compatible	0	94	13
Leviton	6672-1LW	Triac, 150W Dimmable CFL/LED	Compatible	11	96	8
Leviton	DSM10	Triac, 450W Dimmable CFL/LED	Compatible	10	95	23
Legrand	RHCL453PNICCV4	Triac, 450W Dimmable CFL/LED	Compatible	5	97	23
Legrand	ADTP703TUM4	Triac,450W Dimmable CFL/LED	Compatible	8	80	23
Legrand	ADPD453LM2	Triac,450W Dimmable CFL/LED	Compatible	19	97	23
Legrand	RHL373PW	Triac, 250W LED	Compatible	2	95	13
Control 4	C4-APD120-WH	ELV, 120W LED	Compatible	0	100	6
Control 4	C4-FPD120-WH	Triac, 200W LED	Compatible	0	100	10
Control 4	C4-FPD120-WH	Triac, 200W LED	Compatible	0	96	200

* Minimal buzzing noise may occur with some dimmers