

PIVOT

When searching for lighting flexibility, look no further than our 3", 4" & 6" flat gimbal LED downlights. With powerful lumen output and the ability to direct light with a 360° rotation and a 90° tilt angle, this product will meet your every need.

FGM4-3K, FGM4-CC



FGM2-CC



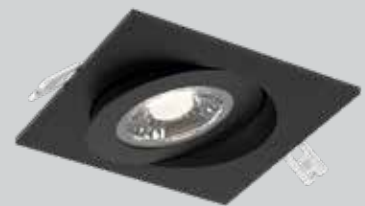
FGM3-CC



FGM6-CC



FGM4SQ-CC



NEW



COLOR TEMPERATURE*



WET

90°

SWIVEL/DIRECTIONAL



AIR TIGHT

IC

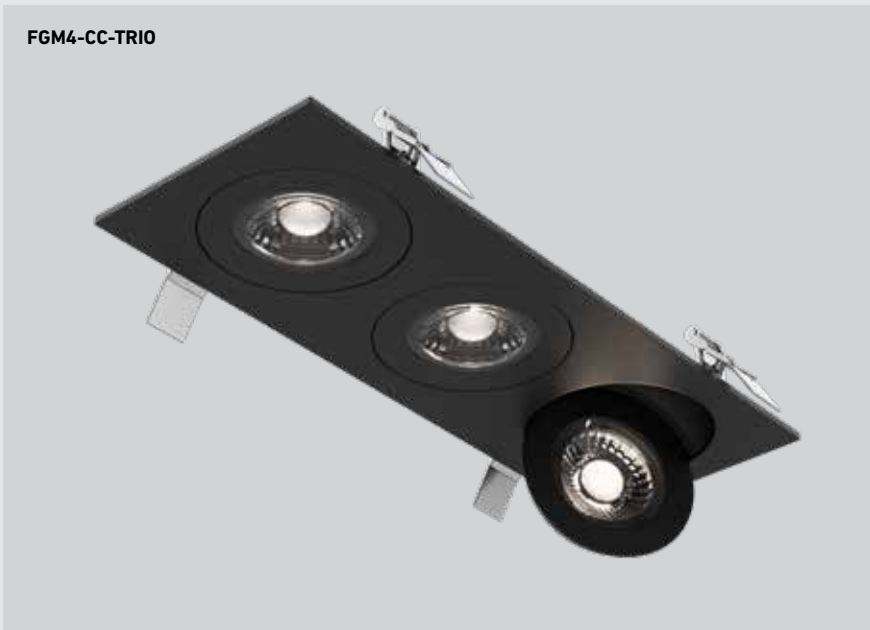
RATED

T24
JA8

CERTIFIED



Intertek



*Not available for model FGM4-3K

**Models FGM3-3k, FGM3-CC, FGM4-CC, and FGM4SQ-CC only

NEW

PIVOT

When searching for lighting flexibility, look no further than our 4-inch square flat gimbal LED downlight. With a powerful lumen output and the ability to direct light through a 360° rotation and a 90° tilt angle, this product will meet all your lighting needs.



COLOR TEMPERATURE*



WET

90°

SWIVEL/DIRECTIONAL



AIR TIGHT

IC

RATED

T24
JA8

CERTIFIED



Intertek



Model	Size	Watts	Delivered lumens	CRI	Color °T	Voltage options ⚡
FGM4-3K	4"	9 W	700 lm	90	3000 K	120V TRIAC dimming
FGM2-CC	2"	6 W	500 lm		2700, 3000, 3500, 4000, 5000 K	or
FGM3-CC	3"	6 W	570 lm			
FGM4-CC	4"	9 W	800 lm			V: 120 / 277 / 347V 0-10V dimming (Check for availability)
FGM6-CC	6"	14 W	1050 lm			
FGM4SQ-CC	4"	9 W	800 lm			
FGM4-CC-DUO	2x 4"	18 W	1475 lm			
FGM4-CC-TRIO	3x 4"	27 W	2300 lm			

*Not available for model FGM4-3K

**Models FGM3-3k, FGM3-CC, FGM4-CC, and FGM4SQ-CC only

FGM2-CC

Ø2-3/4"



1"

Ø3-1/8"

FGM3-CC

Ø3-3/8"



1-1/4"

Ø3-7/8"

FGM4-CC

Ø4-1/4"

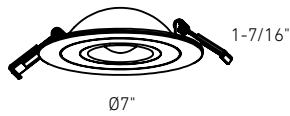


1-1/4"

Ø4-7/8"

FGM6-CC

Ø6-1/4"

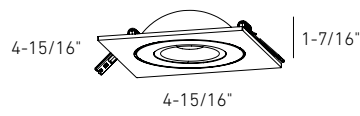


1-7/16"

Ø7"

FGM4SQ

Ø4-1/4"

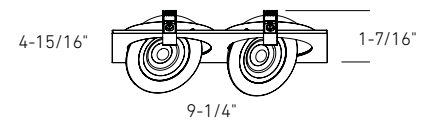


1-7/16"

4-15/16"

FGM4-CC-DUO

8-5/8" X 4-3/4"

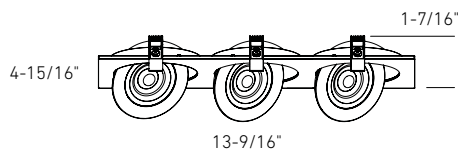


1-7/16"

9-1/4"

FGM4-CC-TRIO

13" X 4-5/8"



1-7/16"

13-9/16"

Specifications

Every fixture includes a junction box with integrated dimmable driver
 Can be daisy chained
 90° tilting, 360° rotation
 Aluminum construction
 Switch-selectable CCT
 Low profile
 40° beam spread
 5-year warranty

Finish

- **BK** Black
- **SN** Satin Nickel (FGM4, FGM6 only)
- **WH** White

Accessories

- RFP-UNI**
Universal rough-in plate
- RFP-23**
Rough-in plate for 3" model
- RFP-46**
Rough-in plate for 4" and 6" models
- RFP-DUO**
Rough-in plate for FGM4-CC-DUO
- RFP-TRIO**
Rough-in plate for FGM4-CC-TRIO
- REC-3K-EXT8FT**
8-foot extension cable for FGM4-3K
- REC-3K-EXT20FT**
20-foot extension cable for FGM4-3K
- REC-CC-EXT8FT**
8-foot extension cable for FGMX-CC models
- REC-CC-EXT20FT**
20-foot extension cable for FGMX-CC models

Multi-voltage (V)

This product family offers multi-voltage drivers (120/277/347) that are dimmable using 0-10V dimming systems. Please note that longer lead times may apply for this option. Kindly reach out to your DALI representative for additional information and to confirm availability.

Note

Other color temperatures, finishes, and voltage options are available but may require minimum order quantities (MOQs) and longer lead times. Please contact your DALI representative for more information.